

EnerVista

BY INKSTER PARK



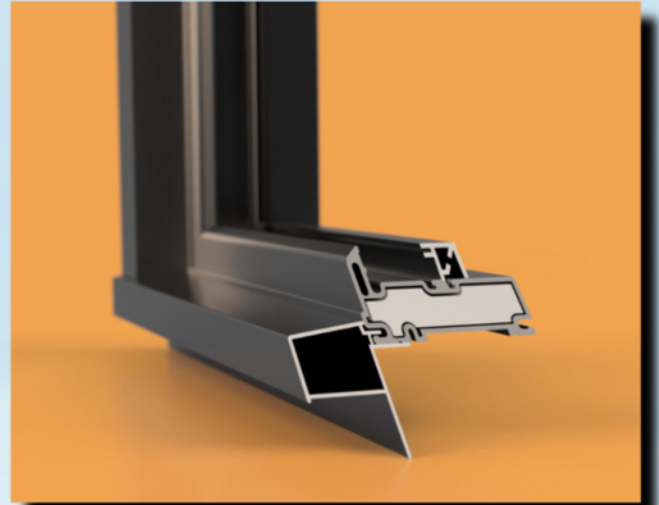
Energy Efficiency with a Breathtaking *Vista*

Superior Design for Our Northern Climate

Strong Foundation; The strength and rigidity of the fibreglass framing system is the foundation of the Enervista™ Window System.

Insulated Frame and Sash; The profile chambers of the fibreglass frame and sash are fitted with foam insulation for superb energy performance.

Manufacturing Precision; The fibreglass window framing and sash are manufactured to exacting tolerances to achieve the aesthetics required, as well as the ultimate strength expected from a high performance window system.



Superior Weatherstrip System; The heart of the window system performance is the design, installation, and attachment specifics of the RIGID-LOC® Triple Weatherstrip System. Weatherstrip corners are precisely form fitted and fastidiously coped to create a very tight seal, something rarely seen on other systems.



High-Performance Window Hardware; Modern hardware components are sourced from top names in the window industry to ensure Performance and Reliability. Stylish window hardware with a Robust Multipoint Locking System ensures a Positive Seal.



Superior Physical Test Results

Window systems are subjected to stringent laboratory tests (by an internationally certified laboratory) for water penetration, air infiltration and exfiltration, as well as structural tests to determine extreme performance limitations. These physical tests are conducted under the requirements of NAFS (North American Fenestration Standard). Enervista™ Window Systems achieved superior results when subjected to the NAFS performance tests (Test results available upon request).



Outstanding Energy Efficiency, Energy Performance Standards;

Energivista™ Window Systems incorporate the highest performing glass products in the industry.

Triple glazing with multiple Low E surfaces are incorporated to achieve Outstanding Energy Efficiency.

Laboratory tests, to measure Energy Performance, have been conducted and certified by international accreditation organizations. Energy performance achievements displayed on Canada's Energy Star website show that EnerVista™ Window System products by Inkster Park Millwork qualify for the Canada Greener Homes Initiative, including the prestigious Energy Star Most Efficient Models.

RIGID-LOC®* Corner Attachment System;

The EnerVista™ Window System utilizes an injection of high performance cross-linking adhesive into the profile openings at the corners of the window, and together with state-of-the-art corner sealants, the RIGID-LOC® Corner Attachment System ensures window corners are locked together and tightly sealed to prevent any air or moisture penetration, in addition to being much more thermally efficient than those using metal inserts and/or attachment screws.

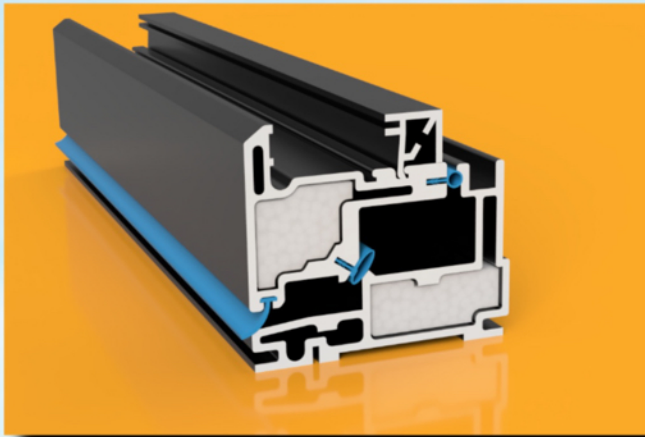


Check it out at FlexScreen.com

Revolutionary FlexScreen® System;

Inkster Park Millwork Ltd., with it's EnerVista™ Window System, is the First Fibreglass Window System manufactured in Canada to incorporate the Revolutionary FlexScreen® System.

Traditional window screens are bulky and flimsy aluminum frames that bend and damage easily, require colour matching, and impede your view to the outside. The FlexScreen® design incorporates a sleek, flexible perimeter frame made of spring-steel, that allows the FlexScreen® frame to be flexed, inserted and locked into the screen retention pocket designed into the window frame. Since the screen frame is now not in view, colour matching is not required.



Why Fibreglass is the Right Material for Windows!

*High Strength • Larger Windows • Stable Product
Better Sealing of Glass to Window Frame or Sash
Resistance to Heat Loss • No Problems with Dark Colours
Long Lasting Durable Product • Environmentally Friendly*



Superior Workmanship;

Inkster Park Millwork Ltd. has been manufacturing products for the window and door industry for 57 years, under the same family ownership and management. The Company has earned a Solid Reputation with it's customers. Fit and Finish is our Forte! Never cutting corners means there are no shortcomings to apologize for. Uncompromising Quality has always been our governing philosophy.

RIGID-LOC®

* RIGID-LOC® describes the various Fastening, Joining, Locking, and Sealing Systems and Mechanisms Designed and Developed, or Adopted, in Inkster Park Millwork's Window and Door Product Design and Manufacture. RIGID-LOC® is a Registered Trademark of Inkster Park Millwork Ltd. In North America.

